



BRUCE DENNY

Combining his academic learning of body form with his artistic talents, sculptor Bruce Denny has truly mastered the skills of his chosen medium.

above: Ascension

above right: Fitting In

opposite top: Bruce Denny

opposite bottom: Introspection

Born in 1967 in Suffolk, Bruce Denny spent his youth making things out of anything he could lay his hands on. He was fascinated by both the way things worked and their form and structure. His school years exacerbated the struggle between art and science. In the end, science was the victor, leading to an honours degree in Biology and Chemistry. He wanted to understand what life was all about from the molecular level up.

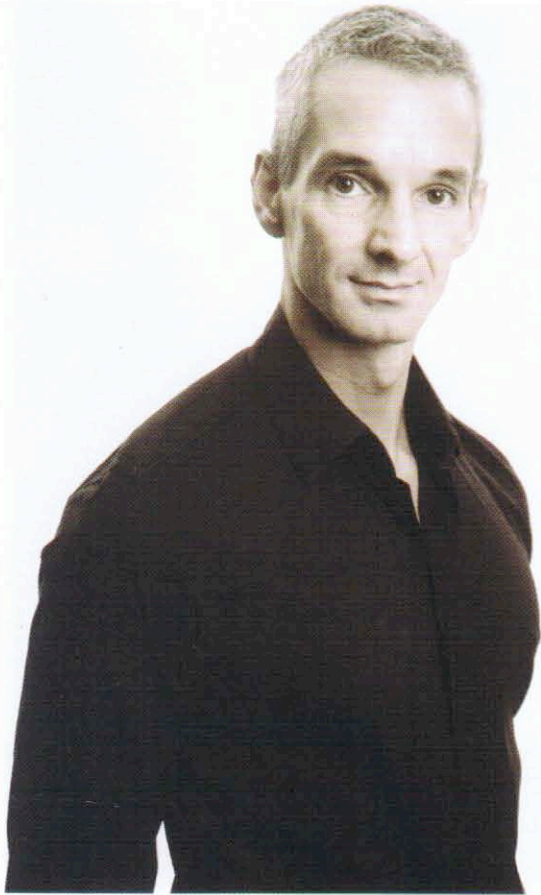
With this thorough grounding, he came to realise that the complexities of human physiology and anatomy play only a small role in the wider picture of life, and that social interaction was key to his further development. He left the solitude of the laboratory behind for a job in the City of London, where the realities of modern day life were played out to the full. Whilst financially rewarding and socially engaging, Bruce felt that his creativity was being stifled. He turned to theatre and the arts to fill the void.



In his search, Bruce discovered sculpture. His love of the human form and function placed figurative works at the centre of his interest and he signed up for a course at Morley College to introduce him to the techniques of life modelling in clay. Finally he had found something to bring all his skills and experiences together.

"Sculpture requires a methodical approach and good spatial awareness, traits usually exhibited by a good scientist. At the same time the original ideas and concepts and the final piece of work require artistic creativity. I have found a medium in which I can express my ideas and desires utilising all my skill and experiences" says Bruce.

In March 2006 he began his latest collection of figurative bronzes. One of the pieces, a self portrait labelled *Fitting In* demonstrates his struggle to find his place in society, and the energy he has accumulated over these past thirty-nine years that is just waiting to burst out and be seen.



These works and many others can be seen at Denny's first exhibition at the Albemarle Gallery, London

Fitting In
Bronze
Edition of 6

We are all complex individuals in a very complex society. Some of us appear to fit in much more easily than others, but what are we hiding about ourselves to achieve it? The best relationships are based on openness and honesty, and yet politics often prevent us from being truly open and free.

This piece is in fact a self-portrait of the artist who has experienced many changes in his life. Struggling with his sexuality in his early years forced him to present only a small part of himself to the outside world. This piece was conceived after numerous incarnations and with a sense that he was finally ready to unfurl and show his true self to the world.

Introspection
Bronze
Edition of 6

There is something new to learn every day about life, about ourselves, about the world we live in. Many of us lead such hectic lives on a roller coaster of activities, responsibilities and emotions that we forget to take the time to process all the things that are going on around us. A little time each day to look inside ourselves is all it takes to put some order into all that chaos.

Ascension
Bronze
Edition of 6

As children, we look forward to growing up as quickly as we can. Each birthday takes us a step closer to independence and makes us bigger and more powerful than our younger contemporaries. As we grow older, we benefit from experience, knowledge and understanding, but there comes a turning point however when the continuing mental and emotional improvements are counterbalanced by the inevitable deterioration of the physical form, and we look back with envy on our youth and innocence.

Bruce Denny

6 March – 5 April

Albemarle Gallery, London W15
Telephone: +44 (0) 20 7499 1616
www.albemarlegallery.com

